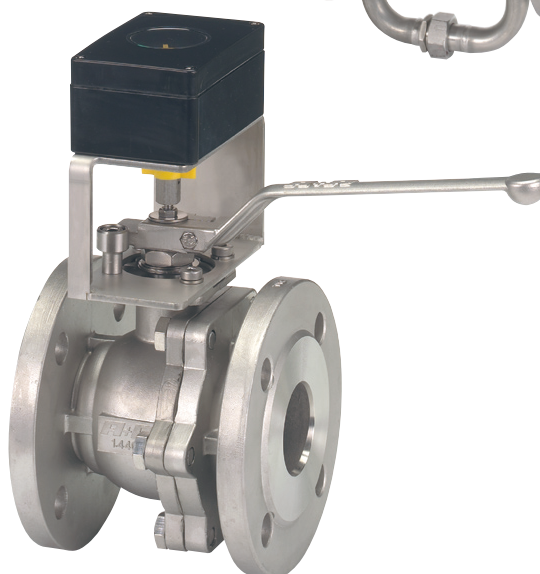
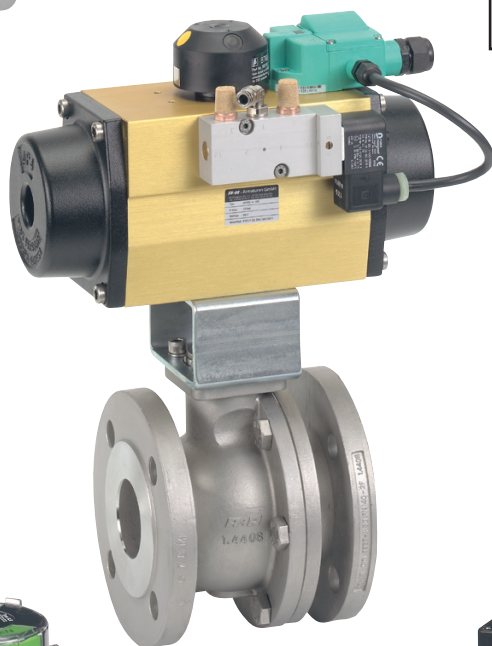
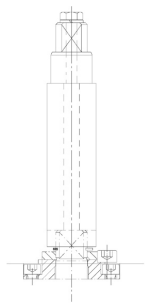


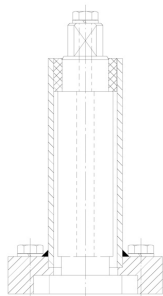
**Accessories for Ball Valves and Automation:**

- Stem Extensions
- Locking and Blocking Devices
- Special Hand Levers
- Manual Worm Gear Operators
- Heating Jackets
- Combination Switch Gear
- Limit Switches
- Solenoid Valve Controls
- BUS-applicable Sensorics and Controls

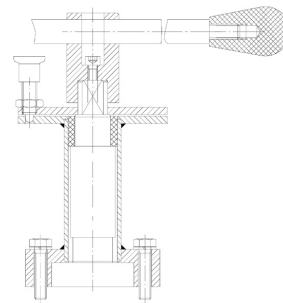




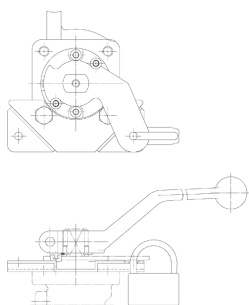
**Stem Extension  
standard**



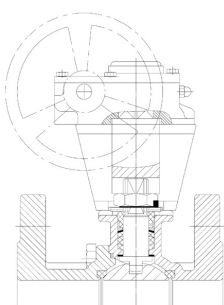
**Stem Extension with  
Support Tube**



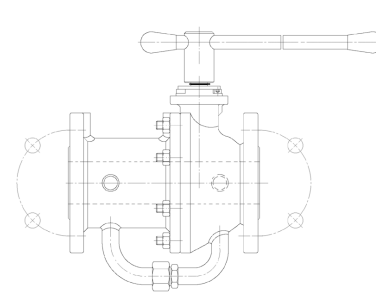
**Stem Extension with Support  
Tube, Blocking Device  
and special Hand Lever**



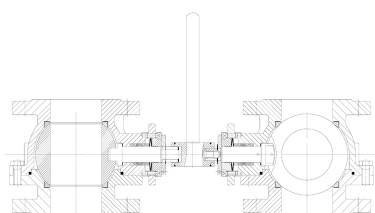
**Locking Device**



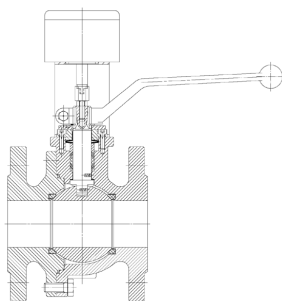
**Worm Gear Operator**



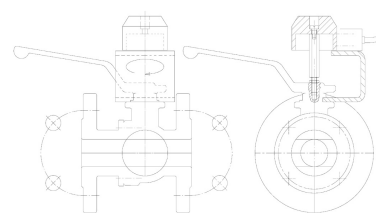
**Heating Jacket and special  
Hand Lever**



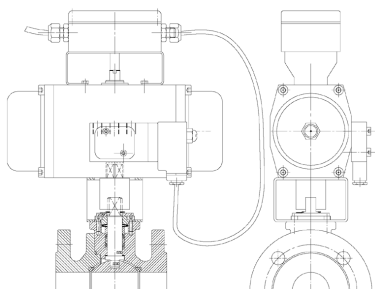
**Ball Valve Combination  
Switch Gear**



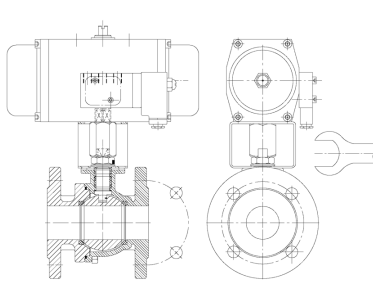
**Ball Valve with  
Limit Switch Box**



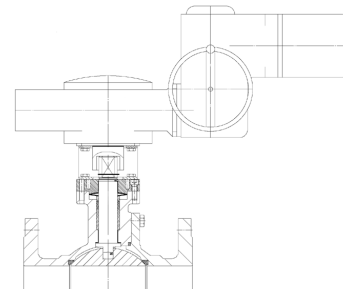
**Ball Valve with inductive  
double Sensor**



**Ball Valve with pneumatic  
Actuator, Limit Switch Box and  
Solenoid Valve (BUS-applicable)**



**Ball Valve with pneumatic  
Actuator, Solenoid Valve and  
Manual Emergency Operation**



**Ball Valve with electrical  
Actuator and Manual Emergency  
Hand Wheel Operation**

© A+R Rev. 00 / 03.04.de Technische Änderungen vorbehalten